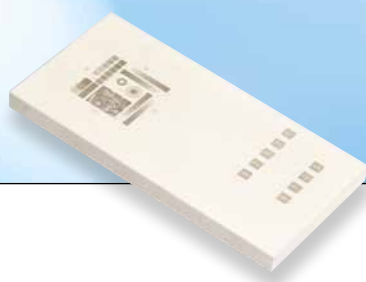
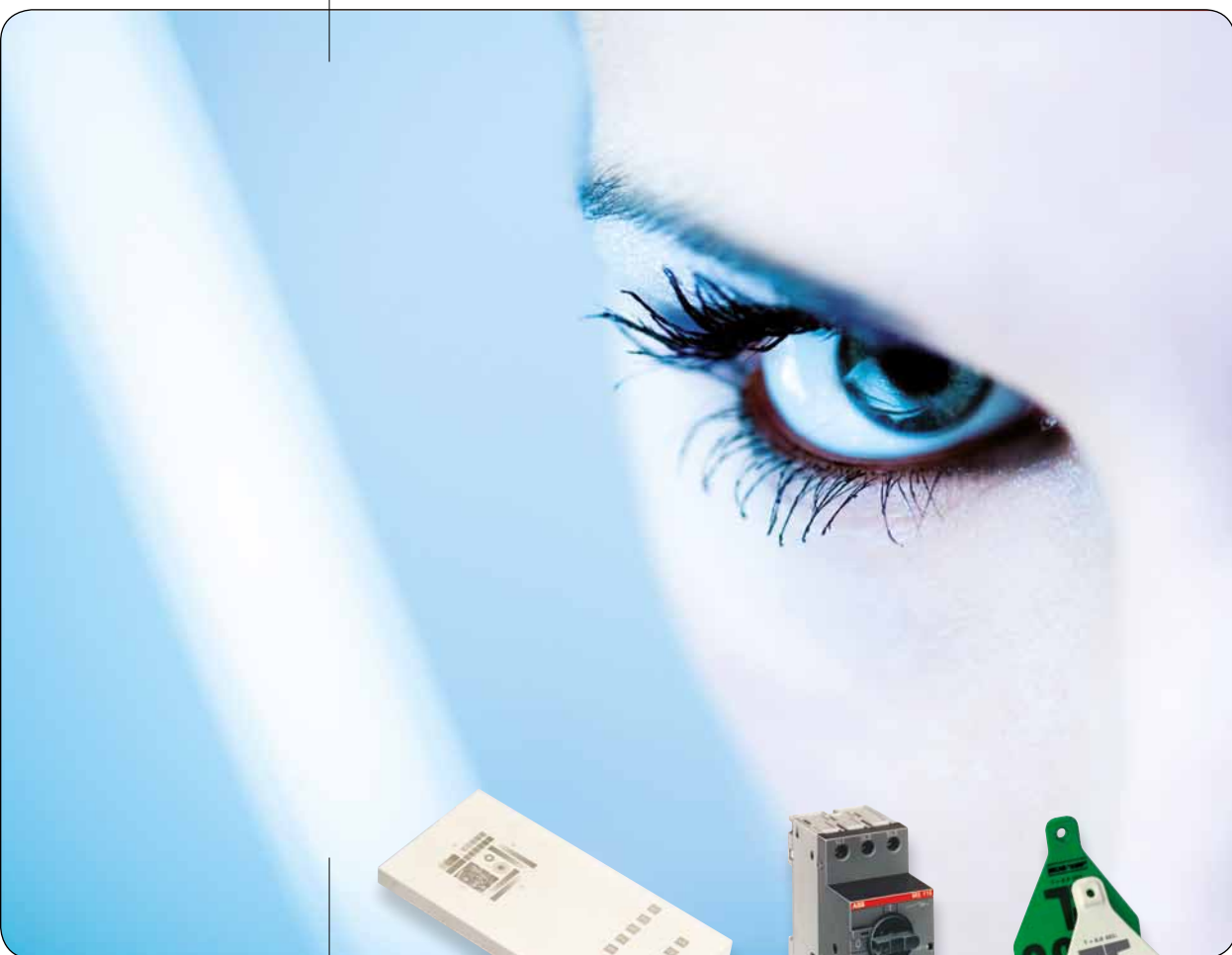


**ALFALAS®**

**WS SERIES**



## **LASER SYSTEMS WORKSTATIONS**

**PLASTICS WITH/WITHOUT COLOUR CHANGE AND FADING, FOAMING,  
METALS, CARBONISATION, ROTOGRAVURE, REMOVAL OF COATING/  
COLOUR/MATERIAL**

*technologies for your future*  
*made in germany*

ORIGINAL

**TAMPOPRINT®**

Tampon printing machines  
ALFALAS® Laser Systems  
Automations

# WSE - WORKSTATION

- Universal workstation with automatic swing door
- Marking of plastics and metals
- Standard servo Z axis, optionally X/Y axes, dividing attachment
- Maintenance-free thanks to air-cooled laser type



Fig.: Working chamber with dividing attachment    Fig.: Automatic swing door - open    Fig.: Example Day & Night Design

TAMPOPRINT® AG offers with the ALFALAS® Workstation "WSE-07" an extremely economic and compact single-user solution. Location-independent machine use thanks to locable lifting rollers in combination with machine feet which are integrated in the machine frame.

An automatic swing door, the integrated servo Z axis as well as a swivel arm for the touchpad keyboard with monitor screen make this workstation a versatile laser marking line.

The applications go from the marking of different plastics and metals to the production of tampon printing clichés.

Included in scope of delivery:

19" TFT monitor screen, touchpad keyboard, as well as a PC integrated in the housing, pre-installed software TP\_alfa®

## Options:

- Offline version software TP\_alfa®
- Adjustment travel x = 200 mm, y = 200 mm, dividing attachment / three-jaw scroll chuck
- Suction unit
- Barcode scanner

# WSED - WORKSTATION

- Universal workstation, rotary table version
- Marking of plastics and metals
- Standard servo Z axis, optionally dividing attachment
- Maintenance-free thanks to air-cooled laser types



Fig.: Detail view rotary table    Fig.: Detail view of working place    Fig.: Example laser engraving on aluminium

TAMPOPRINT® AG offers with the ALFALAS® Workstation "WSED" an extremely economic and compact single-user solution.

The maintenance-free (air-cooled) laser line is perfectly suitable for small and medium-sized serial productions.

Thanks to the option of the laser component, this hand-work place is optimally configured for the respective application.

Included in scope of delivery:

19" TFT monitor screen, touchpad keyboard, as well as a PC integrated in the housing, pre-installed software TP\_alfa®

## Options:

- Offline version software TP\_alfa®
- Adjustment travel x = 200 mm, dividing attachment / three-jaw scroll chuck
- Suction unit
- Light barrier
- Foot switch
- Rotary table (oscillating operation, indexing)
- Barcode scanner
- X servo axis



▼ WSE(D)

▲ WSE(D)

▼ WSE(D)

▼ WSE(D)

▲ WSE(D)

▼ WS

## Technical Data:

Article Number	41 05 32 (SK 86)
Laser component	SK 62, 622, 86, 65
Dimensions (WxDxH)	mm 1.100 x 800 x 1.570
Standing work position	yes
Weight	kg 250
Workpiece dimensions max. (WxDxH)	mm 500 x 400 H = depending on objective
Workpiece weight max.	kg 15
Marking area size (objective f-160, standard)	mm 115 x 115
Axis travel	mm z = 300
Rotary table	∅ mm -
Door	electrical
Working height	mm 860
Connected voltage	1/N/PE, 230V, 50/60 Hz
Connected load max.	kW 2
Colour	RAL 5007, 7031, 7038
Laser class (acc. to DIN EN 60825.1)	1

## Technical Data:

Article Number	41 05 33 (SK 86)
Laser component	SK 62, 622, 86, 65
Dimensions (WxDxH)	mm 1.100 x 800 x 1.560
Standing work position	yes
Weight	kg 220
Workpiece dimensions max. (WxDxH)	mm approx. 150 x 150 x 200
Workpiece weight max.	kg 1,5
Marking area size (objective f-160, standard)	mm 115 x 115
Axis travel	mm z = 300
Rotary table	∅ mm 550
Door	bulkhead partition
Working height	mm 860
Connected voltage	1/N/PE, 230V, 50/60 Hz
Connected load max.	kW 2,5
Colour	RAL 5007, 7031, 7038
Laser class (acc. to DIN EN 60825.1)	1

# WSM - WORKSTATION MULTI

- Allrounder with manifold application possibilities
- For all kinds of markings and engravings
- Automatic attention handling of palletised workpieces



Fig.: Working chamber      Fig.: Control cabinet      Fig.: Multifunction jig for advertising material

Our Workstation "WSM" for marking different plastics, metals and glass.

Ideal for the production of complex laser processes such as deep engraving or glass marking.

Once positioned and using the servo X/Y/Z axes, workpieces of different sizes and forms can be marked with repeated accuracy in one operating process.

Included in scope of delivery:  
19" TFT monitor screen, touchpad keyboard, as well as a PC integrated in the housing, pre-installed software TP\_alfa®

## Options:

- Offline version software TP\_alfa®
- Dividing attachment, three-jaw scroll chuck
- Suction unit
- Barcode scanner



▼ WS

▲ WSE(D)

▼ WSM

▲ WST

▼ WSE

▲ WSE

## Technical Data:

Article Number		41 05 39 (SK 86)
Laser component	SK	32, 33, 62, 65, 622, 86, 98
Dimensions (WxDxH)	mm	1100 x 800 x 1570
Seated work position		yes
Weight	kg	350
Workpiece dimensions max. (WxDxH)	mm	300 x 300 x 250
Workpiece weight max.	kg	approx. 15
Marking area size (objective f-160, standard)	mm	115 x 115
Axis travel	mm	x = 300 y = 300 z = 260
Rotary table	∅ mm	-
Door		electrical
Working height	mm	860
Connected voltage		1/N/PE, 230V, 50/60 Hz
Connected load max.	kW	2
Colour		RAL 5007, 7031, 7038
Laser class (acc. to DIN EN 60825.1)		1

# WST - WORKSTATION

- Hand-work place for your laboratory or your workbench
- Marking of small series made of plastics and metals
- Ideal for manufacturing of tampon printing clichés

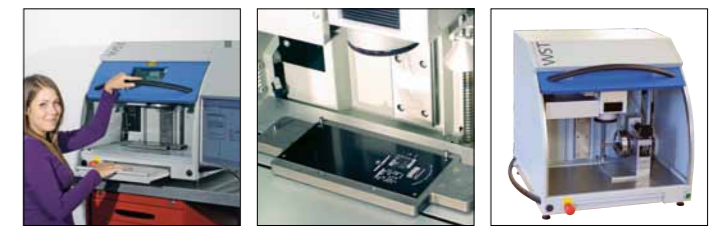


Fig.: Example - Laser marked sample part      Fig.: Example - Laser marked sample part      Fig.: Working chamber with dividing attachment

TAMPOPRINT® AG offers with the ALFALAS® Workstation "WST" a compact benchtop working place. The "WST" is perfectly suitable for marking plastic and metal parts. Equipped with the same performance features as the Workstation "WSE" it can be placed practically on every existing workbench.

Included in scope of delivery:  
19" TFT monitor screen, touchpad keyboard, as well as a PC integrated in the housing, pre-installed software TP\_alfa®

Cliché production of the following tampon printing cliché types:  
Hightech ceramic cliché cylinder, ceramic cliché, steel cliché, Aloxid-special cliché, Magnet-Aloxid cliché, Magnet-microflex cliché

## Options:

- Offline version software TP\_alfa®
- Dividing attachment
- Cliché holding device
- Servo X axis
- Suction device
- Barcode scanner

## Technical Data:

Article Number		41 05 36
Laser component	SK	62 (65)
Dimensions (WxDxH)	mm	1.160 x 600 x 640
Seated / Standing work position		yes
Weight	kg	90
Workpiece dimensions max. (WxDxH)	mm	450 x 250 x 45
Workpiece weight max.	kg	approx. 15
Marking area size (objective f-160, standard)	mm	115 x 115
Axis travel	mm	z = 240
Rotary table	∅ mm	-
Door		manual sliding door
Working height	mm	benchtop model
Connected voltage		1/N/PE 230V/115 V, 50/60 Hz
Connected load max.	kW	1,5
Colour		RAL 5007, 7038
Laser class (acc. to DIN EN 60825.1)		1

# WS - WORKSTATION

- Good ergonomics meets highest precision
- Seated work position for single-part and series production
- Basis for laser performances from 5 up to 100 Watt



Fig.: Working area      Fig.: Detail view rotary table Ø 550 mm / Ø 650 mm      Fig.: Jig and workpiece (Day/Night Design)

The Workstation „WS“ combines comfortable production conditions and the versatility of different laser systems.

Loading and unloading possibilities at the front and rear sides of the machine, a servo Z axis, as well as 2 rotary table variants offer flexibility and quality for highest requirements.

Included in scope of delivery:  
19" TFT monitor screen, touchpad keyboard, as well as a PC integrated in the housing, pre-installed software TP\_alfa®

## Options:

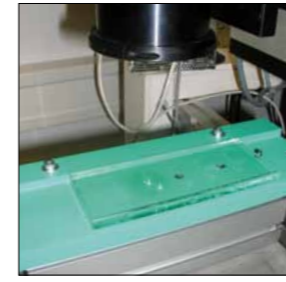
- Offline version software TP\_alfa®
- Dividing attachment / three-jaw scroll chuck
- Suction unit
- Light barrier
- Foot switch
- Rotary table (oscillating operation, indexing, diameter 650 mm)
- Barcode scanner



## Technical Data:

Article Number		41 03 49
Laser component	SK	32, 33, 62, 65, 622, 86, 90, 98
Dimensions (WxDxH)	mm	2.000 x 1.000 x 1.600
Seated work position		yes
Weight	kg	650
Workpiece dimensions max. (WxDxH)	mm	150 x 150 x 180
Workpiece weight max.	kg	approx. 1,5
Marking area size (objective f-160, standard)	mm	115 x 115
Axis travel	mm	z = 300
Rotary table	Ø mm	550
Door		bulkhead partition
Working height	mm	800
Connected voltage		3/N/PE, 400V, 50/60 Hz
Connected load max.	kW	2,5 - 7
Colour		Sikkens AKZO 340 A2
Laser class (acc. to DIN EN 60825.1)		1

# OPTIONS + ACCESSORIES



UV laser



Glass plate UV laser marked



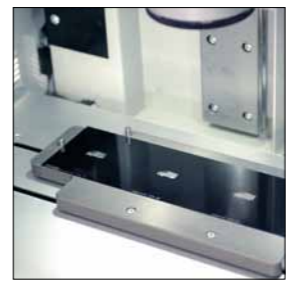
Dividing attachment with scroll chuck



Dividing attachment with scroll chuck transmission 10:1



Rotary table Ø 550 mm / Ø 650 mm



X axis



Light curtain



Servo drive



Glass tube, 2D coding



Glass tube, barcode



Hightech ceramic cliché, laser marked



Ceramic cliché, laser marked



Suction and filter unit Art.No. 41 02 49



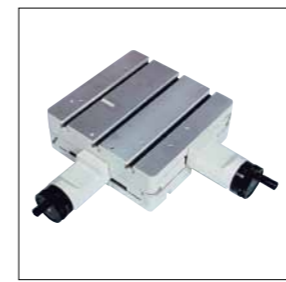
Suction and filter unit Art.No. 41 02 42



Suction and filter unit Art.No. 41 08 86



External cooling unit



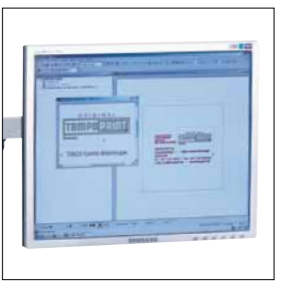
Aluminium cross table



Foot switch



Sliding door



Touchscreen panel

*Headquarters*



**TAMPOPRINT® Special machine construction since 1978**



**TAMPOPRINT® International Corporation, USA**  
subsidiary since 1994  
[www.tampoprint.com](http://www.tampoprint.com)



**TAMPOPRINT® IBERIA S.A.U., Spain**  
subsidiary since 2000  
[www.tampoprint.es](http://www.tampoprint.es)

Trademarks of TAMPOPRINT® AG:



Dealer:



**TAMPOPRINT® AG**

Lingwiesenstraße 1  
70825 Korntal-Münchingen, GERMANY  
☎ +49 7150 928-0  
Fax: +49 7150 928-400  
E-Mail: [info@tampoprint.de](mailto:info@tampoprint.de)

**"Ventes et Affaires Françaises"**

☎ +49 7150 928-144  
Fax: +49 7150 928-432  
E-Mail: [ventes@tampoprint.de](mailto:ventes@tampoprint.de)  
<http://www.tampoprint.de>

**TAMPOPRINT® INTERNATIONAL CORP.**

1400 26th Street, Vero Beach, FL 32960, USA  
☎ +1 772 778-8896, 800 810-8896  
Fax: +1 772 778-8289  
E-Mail: [sales@tampoprint.com](mailto:sales@tampoprint.com)  
<http://www.tampoprint.com>

**TAMPOPRINT® IBERIA S.A.U.**

c/Caspe 127-135 local B, 08013 Barcelona, SPAIN  
☎ +34 93 2327161  
Fax: +34 93 2471500  
E-Mail: [tampoprint@tampoprint.es](mailto:tampoprint@tampoprint.es)  
<http://www.tampoprint.es>

ORIGINAL



The reproduction of trademarks and brands used in this brochure, even if not explicitly expressed, does not justify the assumption that such names or symbols may be considered as free as defined by the Trademark Act and may therefore freely be used. The rights are the property of the respective owner.

TAMPOPRINT® products are permanently updated to keep pace with the latest technological developments. For this reason, figures and descriptions are non-binding. Our machines are manufactured based on the currently valid European Machinery Directives as well as the European product standards EN 1010 - 1 and EN 1010 - 2.

**Subject to alterations! ©Copyright**