

ALFALAS®

CT-60 BENCHTOP CLICHÉ LASER



"Do-it-yourself" tampon printing cliché plates – ready for print

Print image change directly at the "CT-60"

Ideal for your independence

technologies for your future
made in germany

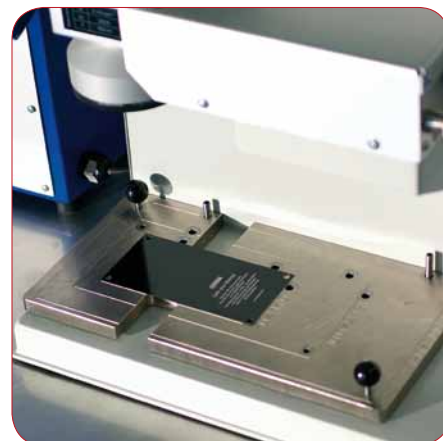
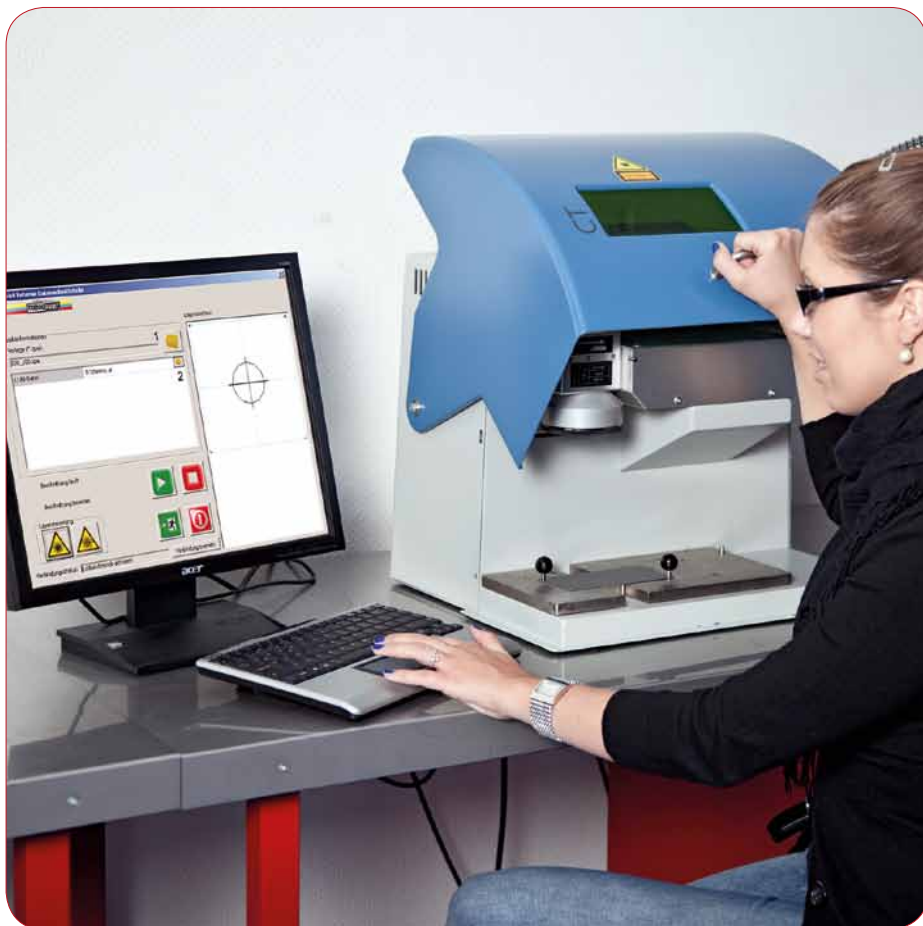
ORIGINAL

TAMPOPRINT®

Tampon printing machines
ALFALAS® Laser Systems
Automations

Create economically and independently your tampon printing clichés

The ALFALAS® "CT-60" benchtop cliché laser is a real alternative to the classic cliché production. This investment makes sense for motifs which change often.



Ready to print tampon printing cliché formats of up to max. 300 x 150 mm can be produced.

The cliché holding device centers in correct position the "Magnet-microflex clichés", "Magnet-Aloxid clichés" as well as the "Aloxid-special clichés" which were developed exclusively for the "CT-60".

Optionally available: Format adaptors for cliché formats used in "open" TAMPOPRINT® systems as well as cliché formats of other manufacturers.

Time saving is guaranteed!

The preinstalled user interface allows quick print image changes directly at the "CT-60". Thanks to the possibility to connect the "CT-60" with your computer network, the direct access to your current printing data is guaranteed.

Parameters of TAMPOPRINT® cliché types and sizes are preinstalled for direct enquiry. Thereby 100% reproducibility of the print image position and cliché engraving depths for subsequent orders are guaranteed.



What you need:

Only a table and a 230V socket.

What is no longer necessary?

Special "darkroom with amber light"
Exposure process
Etching process
Washout process
Drying process
as well as all necessary devices and additives

Developed exclusively by TAMPOPRINT®!
Laser engravable tampon printing clichés

Magnet-microflex
cliché

Magnet-Aloxid
cliché

Aloxid-special
cliché

Exclusive
for "CT-60"

Exclusive
for "CT-60"



"CT-60" benchtop laser with provided suction and filter unit

Technical data:

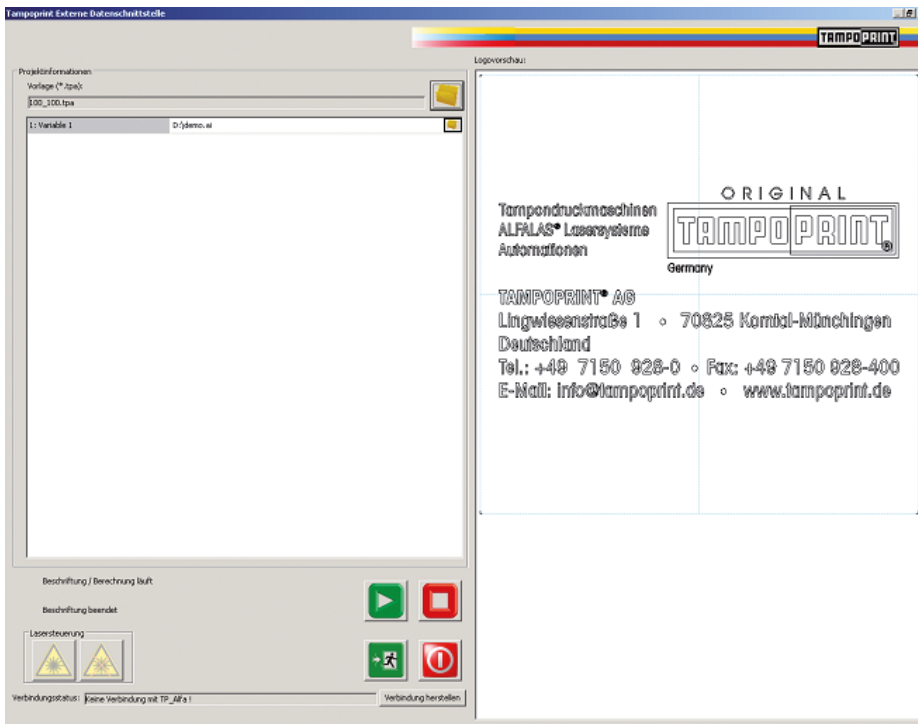
"CT-60" benchtop cliché laser	
Art.No.	41 08 89
Import print image data	Vector/line graphics *.dxf, *.ai, *.plt
Marking area max.	115 x 115 mm
Software preinstalled	TP_alfa® with user interface "CT-60"
Tampon printing cliché types	"Magnet-microflex", "Magnet-Aloxid", "Aloxid-special" cliché
Tampon printing cliché sizes up to max.	300 x 150 mm
Operating software preinstalled	current Microsoft system software, Multilanguage
Laser type	60
Laser medium	Yb:YAG
Wavelength	1.064 nm
Output power	< 5 Watt
Object lens	f-Theta 160 mm
Cooling	Air
Working chamber illuminated	380 width mm 180 depth mm
Inspection glass / Laser safety glass	Yes
Connected voltage +/-10 %	230V/1/N/PE
Housing design	Laser class 1, DIN EN 60825.1
Width mm	470 CT / 1.000 *
Depth mm	500 CT / 700 *
Height mm	450 CT
Weight approx. kg	20 CT
Connections on the rear side of the unit	USB, network connection, connection adaptor for suction and filter unit

* Space requirement incl. 19" TFT, suction and filter unit

Training goes without saying

In order to gain the knowledge of the digital pre-press, you are welcome to book an intensive user training.

> Send enquiries to
mailto:seminar@tampprint.de



Preinstalled user interface

Standard Add-on with the "CT-60" benchtop cliché laser.
 Special surface function for the production of ready-for-print tampon printing clichés.
 Possibility to store one's own cliché formats.
 Quick access to your stored data such as: cliché format, print image, cliché engraving depth.

Accessories:

- Suction and filter unit
 Based on BIA dust class H: Art.No. 41 08 86
 Effective air volume: approx. 50-80 m³/h
 Motor power: 100 W
 Connected voltage: 230V/1/N/PE, 50/60 Hz
 Dimensions: W 270 x D 270 x H 450 mm
 Weight: approx. 30 kg

Spare parts:

- Activated carbon filter
 Art.No. 41 01 31
- Filter element for suspended particles
 Art.No. 41 01 39

Dealer:

Scope of supply:

- Mini PC integrated:
 1,2 Ghz processor Intel Celeron,
 100 GB HDD, 1 GB RAM,
 graphics Mirage,
 network connection 100/10 MBit
- TFT 19"
- Cliché support
- Wireless keyboard with touchpad
- Software TP_alfa® + Microsoft system software, multilingual, preinstalled

Option:

- Format adaptors for cliché formats used in "open" TAMPOPRINT® systems as well as cliché formats of other manufacturers.

Contact/Sales:
 E-Mail: alfalas@tampoprint.de



TAMPOPRINT® AG
 Lingwiesenstraße 1
 70825 Kornthal-Münchingen, GERMANY
 ☎ +49 7150 928-0
 Fax: +49 7150 928-400
 E-Mail: info@tampoprint.de
"Ventes et Affaires Françaises"
 ☎ +49 7150 928-144
 Fax: +49 7150 928-432
 E-Mail: ventes@tampoprint.de
 http: www.tampoprint.de

TAMPOPRINT® INTERNATIONAL CORP.
 1400 26th Street, Vero Beach, FL 32960, USA
 ☎ +1 772 778-8896, 800 810-8896
 Fax: +1 772 778-8289
 E-Mail: sales@tampoprint.com
 http: www.tampoprint.com

TAMPOPRINT® IBERIA S.A.U.
 c/Caspe 127-135 local B, 08013 Barcelona, SPAIN
 ☎ +34 93 2327161
 Fax: +34 93 2471500
 E-Mail: tampoprint@tampoprint.es
 http: www.tampoprint.es



The reproduction of trademarks and brands used in this brochure, even if not explicitly expressed, does not justify the assumption that such names or symbols may be considered as free as defined by the Trademark Act and may therefore freely be used. The rights are the property of the respective owner.
 TAMPOPRINT® products are permanently updated to keep pace with the latest technological developments. For this reason, figures and descriptions are non-binding. Our machines are manufactured based on the currently valid European Machinery Directives as well as the European product standards EN 1010 - 1 and EN 1010 - 2.
Subject to alterations! ©Copyright