



Aktuell & INFO rmed

Issue No. 5
Volume 2010

AUTOMATION

REFERENCE "HYBRID 90-2"



TAMPON PRINTING MACHINES
LASER SYSTEMS
AUTOMATIONS

"Hybrid 90-2" replaces up to 5 conventional tampon printing machines

From the barcode directly to the print image - 100% safety for job data

Less personnel and thus lower production costs

technologies for your future
made in germany

ORIGINAL

TAMPOPRINT

Tampon printing machines
ALFALAS® Laser Systems
Automations



Fig.: The „Hybrid 90-2“ two-colour tampon printing machine is used for printing two sides

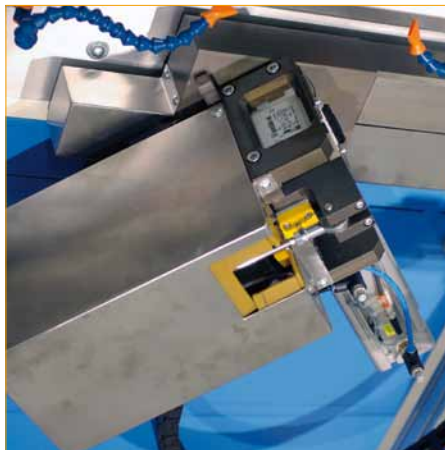


Fig.: The rotary device positions the housings automatically and correctly for printing the two sides

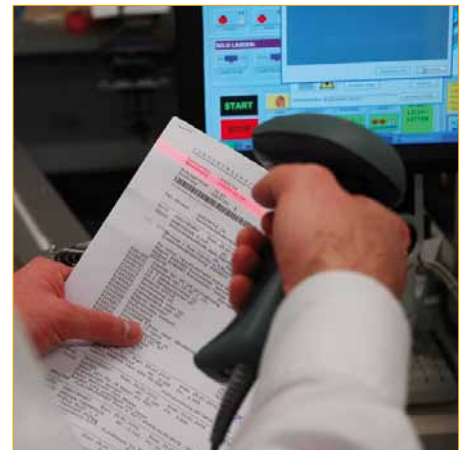


Fig.: The barcode is read in from the order documents at the machine control

Performance features in brief:

Hybrid 90-2

Capacity:

approx. 720 parts/h

Substrate:

Switch housing

Ink/doctoring cup:

Ø 2 x 90 mm

Number of colours:

1

Print image size:

Ø max. 85 mm

Number of print images:

1 print image each on 2 sides of the housing

Cliché production:

integrated

Dimensions (width x depth x height):

1.034 (1.390*) x 1.415 x 1.927 mm

*= Space requirements incl. screen

Highlights:

- Barcode reader with direct connection to SAP
- Rotary kinematics for jig
- Integrated cliché production
- Cliché engraving using ALFALAS® laser system

Advantages:

- One operator only
- Thanks to barcode reader and SAP: 100% data security
- Minimised set-up times

Dealer:

Hybrid replaces five conventional tampon printing machines

Whereas the larger lots at the end of conventional assembly lines are marked with standard tampon printing machines, ABB has decided on the use of special TAMPOPRINT® technology for smaller series: a tampon printing machine with two printing units and integrated cliché production via laser engraving, patented as the "Hybrid 90-2". This replaces the five conventional machines used up to now.

Technology

Instead of producing a classic cliché for each printed image, storing it and equipping the machine if required, the "Hybrid 90-2" generally retains all printed images as a data set in the controls. The ABB application deviates from this by coupling the machine directly to the SAP system. The order papers are allocated a barcode via which the controls can read, and the appropriate printed image is called up via the central ERP system. More than 1000 printed images are stored here. For each order, a new cliché is lasered from a cliché band, after which the printing procedure begins automatically. The lasering process - and therefore the entire set-up time - lasts a maximum of 4 minutes for both sides, depending on the complexity of the printed image.

The trick with the rotation

The "Hybrid 90-2" tampon printing machine can print in two colours. However, ABB only use a single-colour print - but this is printed with different printing images on two sides of the housing in one run.

The procedure: The machine operator inserts a housing into the rotary mount, and the first printing unit prints one side. After that, the housing is turned automatically by 90 degrees and printed on the other side. The part is removed and laid on a conveyor belt.

Although printing only takes place in one colour, most switches display the bright red ABB logo on the front. This is applied in thermal transfer printing directly next to the tampon printing machine. The machine is to be operated by the same employee. Of course it's possible to link and load both machines, but the low piece numbers make this unprofitable. The effects are impressive anyway: up to now three to four employees were occupied in rather unpleasant working conditions; today one person works at a clean workplace.

PUBLISHED IN THE
"Kunststoff Magazin" (excerpt),
Hoppenstedt Publishing GmbH
Author: Meinolf Droegge



TAMPOPRINT® AG

Lingwiesenstraße 1
70825 Korntal-Münchingen, GERMANY
☎ +49 7150 928-0
Fax: +49 7150 928-400
E-Mail: info@tampoprint.de
"Ventes et Affaires Françaises"
☎ +49 7150 928-144
Fax: +49 7150 928-432
E-Mail: ventes@tampoprint.de
http: www.tampoprint.de

TAMPOPRINT® INTERNATIONAL CORP.

1400 26th Street, Vero Beach, FL 32960, USA
☎ +1 772 778-8896, 800 810-8896
Fax: +1 772 778-8289
E-Mail: sales@tampoprint.com
http: www.tampoprint.com

TAMPOPRINT® IBERIA S.A.U.

c/Caspe 127-135 local B, 08013 Barcelona, SPAIN
☎ +34 93 2327161
Fax: +34 93 2471500
E-Mail: tampoprint@tampoprint.es
http: www.tampoprint.es



The reproduction of trademarks and brands used in this brochure, even if not explicitly expressed, does not justify the assumption that such names or symbols may be considered as free as defined by the Trademark Act and may therefore freely be used. The rights are the property of the respective owner.

TAMPOPRINT® products are permanently updated to keep pace with the latest technological developments. For this reason, figures and descriptions are non-binding. Our machines are manufactured based on the currently valid European Machinery Directives as well as the European product standards EN 1010 - 1 and EN 1010 - 2.

Subject to alterations! ©Copyright